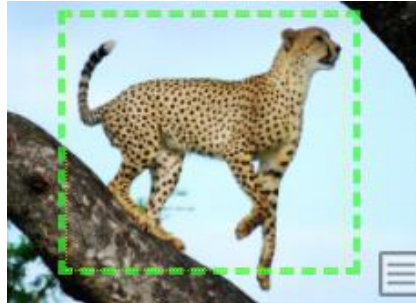


WildEx Image Export App



The WildEx app enables the export of images, with their related metadata, from Wildbook; specifically, annotated images. An annotated image is the animal inside the green dotted line box in the gallery of an encounter record:



In order to export annotated images, you must first generate an excel metadata export file, which is then used to export the related photos from Wildbook. Follow the steps below to complete a WildEx export.

DOWNLOAD THE WILDEX DESKTOP UTILITY

[Go to this T4C website link](#) to access and download the WildEx desktop utility. This is the tool needed to initiate the download of annotated images from Wildbook.

For Mac computers, choose the **.dmg** file – it's 102.7 MB

For PC computers, choose the **.exe** file – it's 126.1 MB

Once the download is completed, click on this file to install it on your computer. Note, you may receive a warning that running or installing the app on your computer may be a risk; you'll need to ignore the warning in order to complete the installation – usually this is done by clicking on the "more info" link in the warning window to enable a "run anyway" button.

GENERATE THE EXPORT FILE IN WILDBOOK

Before you can download images, you need to generate an export file with the metadata of the specific set of images that you want to download.

1. Log in to Wildbook
2. Click on Search from the top navigation menu
3. Select Encounter Search

In the resulting Encounter Search Criteria page, select the criteria that you require to arrive at the subset of your data that you wish to export. Options include:

- Location via GPS or map markers, as well as location by description;
- Date filters
- Species, sex, life stage/state or behaviour
- Image labels such as [keywords*](#) and annotation viewpoints
- Identity filters – encounters with or without IDs (i.e. assigned or unassigned)
- Metadata filters – Occurrence ID, Social Unit, Organization; User name(s), encounter types (approved/unapproved); submitter or photographer name or email, etc
- Biological samples

CONSIDERATIONS

- You can use [*keywords](#) to label images in order to distinguish some images from the rest. For example, you could label some images as an individual’s “Reference” photos – the best left, right, etc, viewpoints in a given ID kit. Once these images have the “Reference” keyword, you can use this filter to search for and download only those images from an individual’s ID kit in Wildbook.
 - To add a keyword to an image, navigate to the source encounter record, click on the image in the gallery, outside of the annotation. On the resulting screen, click on the “add new keyword” option in the top left corner. Select Reference or another keyword from the dropdown menu.
- Remember that only filters applied on the Encounter Search Criteria screen will be applied to the search results; filters applied on the Search Results page will not be applied to the export.
- All exports in Wildbook are based on Search results, however note that only the Encounter Search functionality can be used to create the export file required by the WildEx utility.
- WARNING: Consider your internet bandwidth when generating an export file that will be used to export/download images from Wildbook – the larger your export file, the larger the download unless you further refine the image export using the WildEx desktop utility (per instructions below).

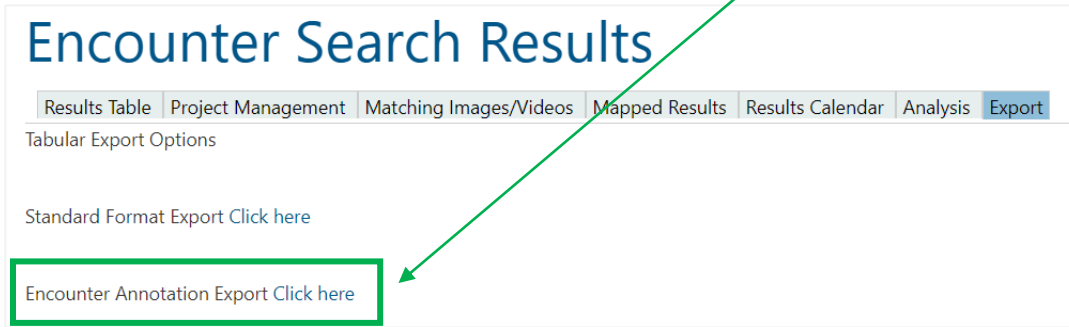
Once you’ve generated an encounter search, you’ll land on a Search Results page like this:

The screenshot shows the 'Encounter Search Results' page. At the top, there are navigation tabs: 'Results Table', 'Project Management', 'Matching Images/Videos', 'Mapped Results', 'Results Calendar', 'Analysis', and 'Export'. The 'Export' tab is highlighted with a green box, and a green arrow points from the text below to it. Below the tabs, there is a search filter section with a text input field containing 'filter by text', 'filter' and 'clear' buttons, and a result count '1 - 10 of 110647'. Below the filter is a table with the following columns: ID, Sighting ID, Alternate ID, Date, Location ID, Taxonomy, Submitter, Created, and Edit Date. The table contains two rows of data for sightings BNP_Lp0012.

ID	Sighting ID	Alternate ID	Date	Location ID	Taxonomy	Submitter	Created	Edit Date
BNP_Lp0012	PNB-H1_Panthera_pardus_2022-07-03 04-21_04-21		2022-07-	Africa - South	Panthera pardus		3/2/2024	3/2/2024
BNP_Lp0012	PNB-H1_Panthera_pardus_2022-07-03 04-21_04-21		2022-07-	Africa - South	Panthera pardus		3/2/2024	3/2/2024

To generate the export of your encounter search results, click on the Export tab.

On the resulting screen, click on the Encounter Annotation Export link:



Save the exported file to the folder of your choice. If you don't need to export the annotated images related to this metadata excel file, you can finish here.

EXPORTING ANNOTATED IMAGES

The WildEx tool uses your export file to find the related annotated images and download them.

Note that only annotations that are matchable are downloadable – so annotations of wild dog tails, for example, will not be downloaded.

You can use the selections in the WildEx tool to refine the list of images that are downloaded, if you choose. For example, if you are downloading ID kits, you may have an individual who has 200 or more encounters in their ID kit. Not all will be perfect photos and many will be of the same flank. If you only need 1 encounter of each viewpoint of the animal, the WildEx tool allows you to specify that.

1. Click to open the WildEx desktop utility
2. Follow steps 2-4 as directed by the tool



WildEx

Download Annotated Images from Wildbook

1. Generate & save Encounter Annotations Export file from Wildbook Encounter Search
2. Select Annotation export file:

📎
3. Include unidentified encounters in export? (Default is No) No Yes
4. Select # of annotations per Individual ID

Default is one each of viewpoints: left, right, front, back (unless export filters excluded viewpoints)

 - If not available, next available similar viewpoint is selected (ex. leftfront, rightback)
 - If 2 annotations per individual is selected, 1 left & 1 right will be exported per individual ID, where available

4

▼

Warning

Consider your internet connection as well as the number of *unidentified* annotations in the source export file before selecting the number of annotations per *ID'd individual* in the download

Download Annotations

Step 3 allows you to include unidentified encounters in your download, if they exist in your export file. You just need to be sure that your export file, which is based on the encounter search criteria that you select, includes the unidentified encounters that you need to download.

Step 4 is specific to the identified encounters that you will be downloading. As mentioned above, when downloading ID'd images, you may only want one of each viewpoint of the animal, not every single image/encounter ever assigned to a given individual.

WARNING!

As you make your selections, remember that the more images you download *the more bandwidth is required*. If you have limited bandwidth, consider modifying either your selections in the WildEx tool, or refine your Encounter Search criteria to generate an export file from the system that has less encounters in it. Consider generating multiple smaller excel exports from Wildbook to be able to do multiple smaller image exports.

ANNOTATED IMAGE DOWNLOAD

The image download is based on 2 factors:

1. The Encounter Search criteria you selected prior to generating the export file
2. The selections you make via the WildEx desktop application

Once you've selected the download criteria in the WildEx tool, you'll be directed by the tool to select the folder where you want the downloaded images to be stored. Once you've done that and clicked to begin the download, the images will be organized into folders as follows:

- Identified annotations – will be organized into one folder per individual ID
- Unidentified annotations – will all be downloaded into a folder labelled "Unidentified_annotations"

Note: you'll only have a folder of unidentified annotations if you click "Yes" in Step 3 of the WildEx app.

ERRORS DURING EXPORT

You may receive an error notification from the WildEx app if there's been an issue with one or more of the images that you're trying to download. The error message will instruct you to use a newly generated excel file once you've fixed the error to re-start the download to obtain the images that caused the error.

To find out what the issue is:

1. Go to the folder where you're downloading the images to
2. You'll find an excel file with the same name as the original export file except with **.resume** added to the file name – open this file
3. Go to the "Encounter.sourceUrl" column (column B) to access the encounter(s) that are causing the download to error
4. Resolve the issue(s)
5. Return to the WildEx desktop utility and select the **.resume** version of the original export file to re-start and complete the download

If you have issues that you're unable to address, please post on the [Wildbook Community Forum](#). Please include the link(s) to the affected encounters from the .resume file and the error message(s) from the last column in the .resume file labelled "wildExErrorMessage".